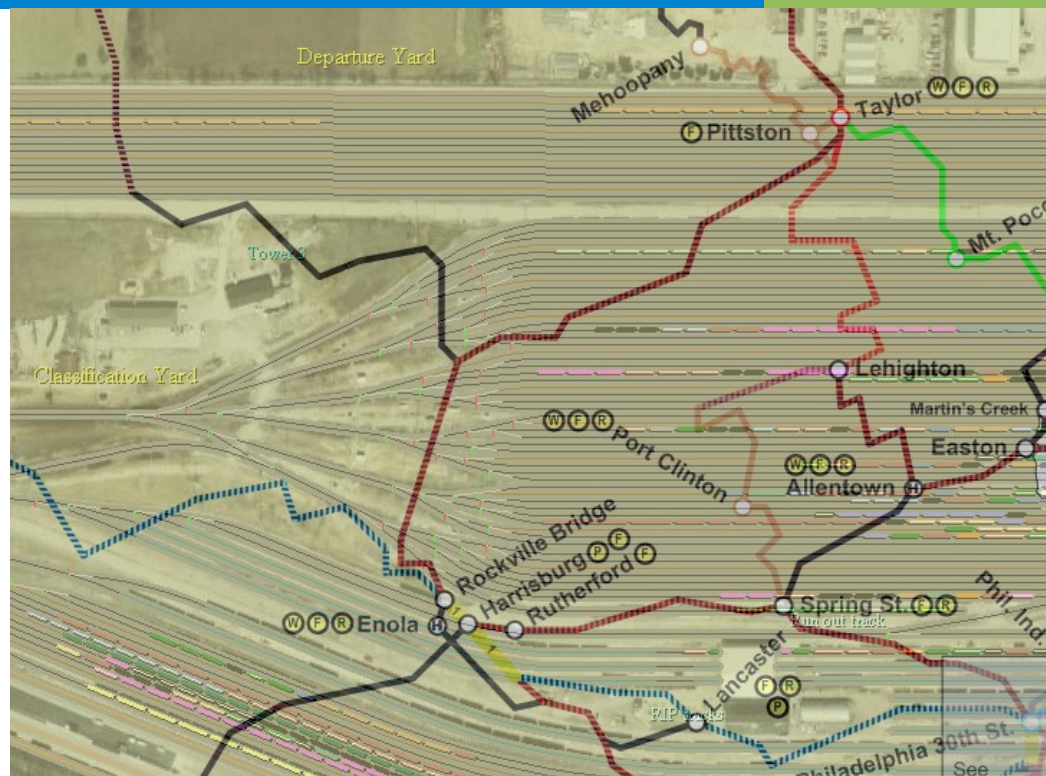


Freight Yard Manager Manual

Command Line Arguments



Robert Verheus
10/14/10

Command Line Arguments Manual

Besides the options menu in FYM, FYM has several other options that can be set via command line arguments.

This manual gives an overview of the available options, what they do and how you need to enable those options.

Available Options

-O	To run FYM in offline mode. With this option you will be running without a connection to the server.
-W n	To specify a reduction in map width – Vista & Windows 7 fix only (n=number of pixels). This option fixes a problem with the right border of the map window in Windows Vista or 7. Usually a value of 15 is good enough to see the exits on the right border again.
-Mn	Produces a list of all connections which are greater than the value of n miles specified. The output is to <ROOT>\server1\connmiles.txt.
-BAU	Sets the option Automatic Update of Local Folder as False (Default is True). This way when you select the Maps & Trains window it will not update the list with the files on your hard disk automatically. The only way to update that list then is by using the List button.
-FP-'Filepath'	User specified file path for FYM files - Default is <ROOT>. This is very handy when you want your FYM installation on a centralized location (for example a network share) and then run FYM from different computers using that location as the location for all the FYM files. That way you have the same set of files on all those computers, so no need anymore to move .wag files around or upload and download complete yard contents in order to play FYM on a different computer with the same yard contents as on your other computer.
-XS	Draws the Common or Static switch leg. Default the common leg is not drawn in FYM.
-OPC:n	Sets the opacity value for the 'Set Switched Road' Form. Where n is an integer with values of 50-100
-SHF	Sets the creation of engines to enter a map as Short Hood Forward instead of the default Long Hood Forward.
-LOG	This option enables the Monitoring of FTP activity. This will create log files for any actions you do which involve the server. So file uploads and downloads, connection map downloads, yard file downloads, etc.
-AWL	Sets a larger width for the Car Mark Column on the Train Information Form.
-A	Use an alternative colour scheme for Maps & Trains form.
-FM:n	Sets the number of pixels to move for each arrow key press. N is an integer with values of 50-200
-XD	Turns off the direction indicators for stationary trains.
-PKL	Retains information on loads after car is unloaded.
-KA	Classify cars by source rather than destination. Hump yards only.
-BUP	Uses the original FTP method for uploading train files to the Maps & Trains server.

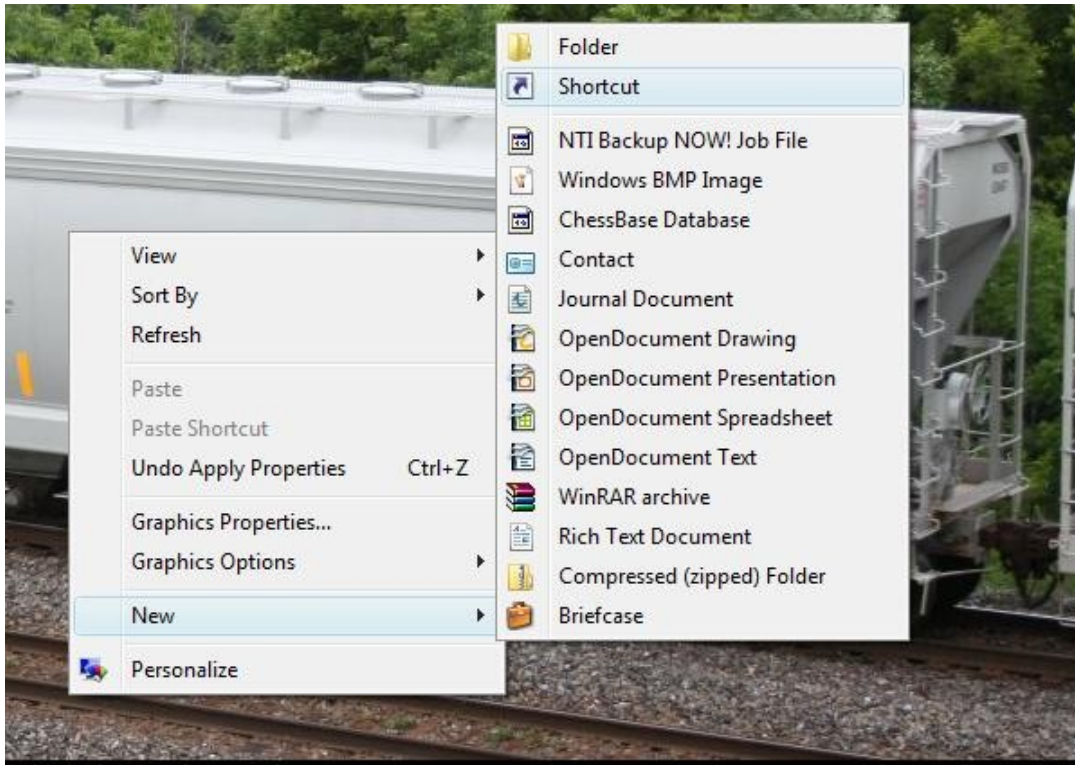
- BOR Uses original FTP method to download startup & TSAR files
- BOT Uses an alternative method to download startup & TSAR files

Please note -BOR and -BOT are mutually exclusive.

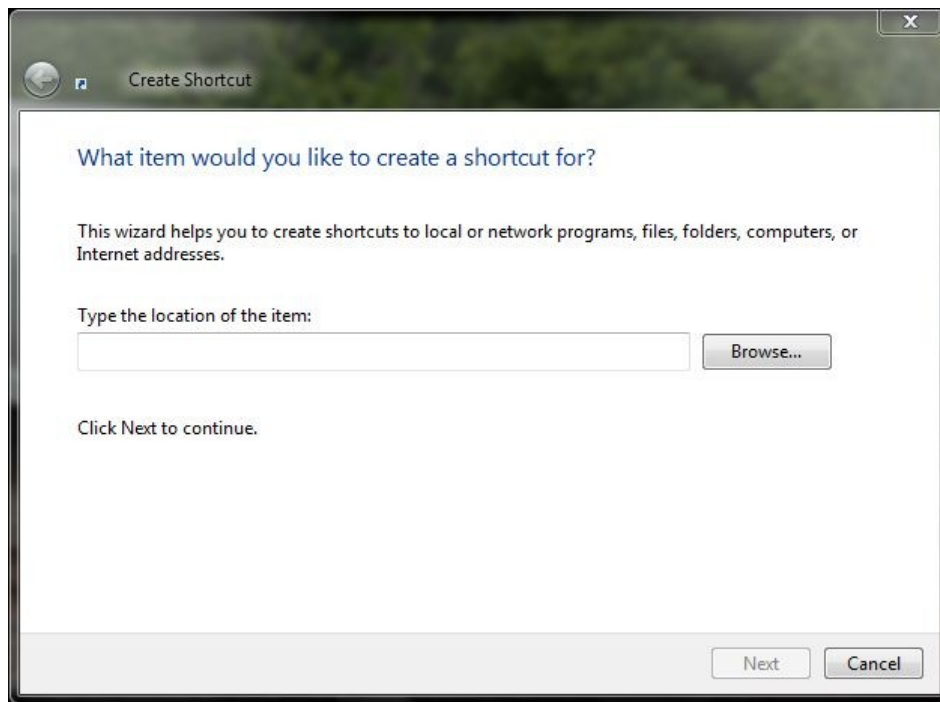
Using Command Line Arguments

To use command line arguments you need to create a shortcut for FYM in Windows as follows:

1. Go to the location where you want the shortcut located. This can be your desktop or you can browse with the windows explorer to any other map you want.
2. Press the right mouse button (mouse pointer must not be placed on any file in that folder).
3. Select New and then Shortcut in that context menu.



4. This will now start the New Shortcut Wizard.



5. Type in the exact location of the FYM executable (FYManager.exe) or use the browse button to select the FYM executable by looking it up in your directory structure. So the text box should finally contain something like "C:\fym\FYManager.exe".
6. Click Next. You can now enter a name for the shortcut. This can be anything you want, for example "FYManager with logging".

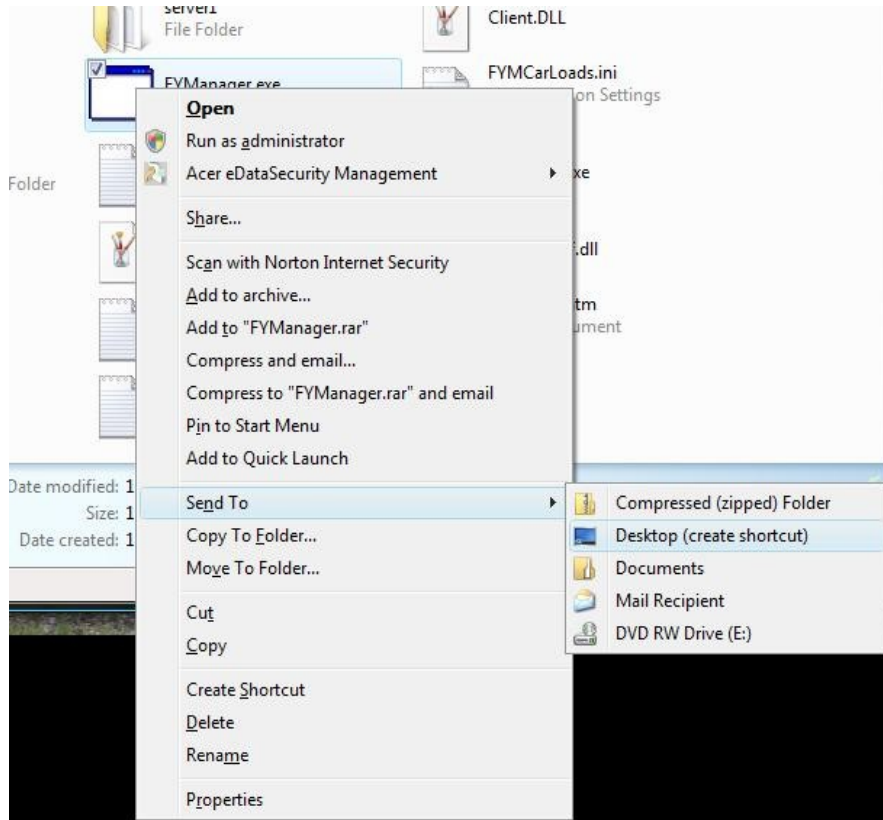


7. By clicking on the Finish button now, you have finished creating the shortcut.

Other ways of creating shortcuts:

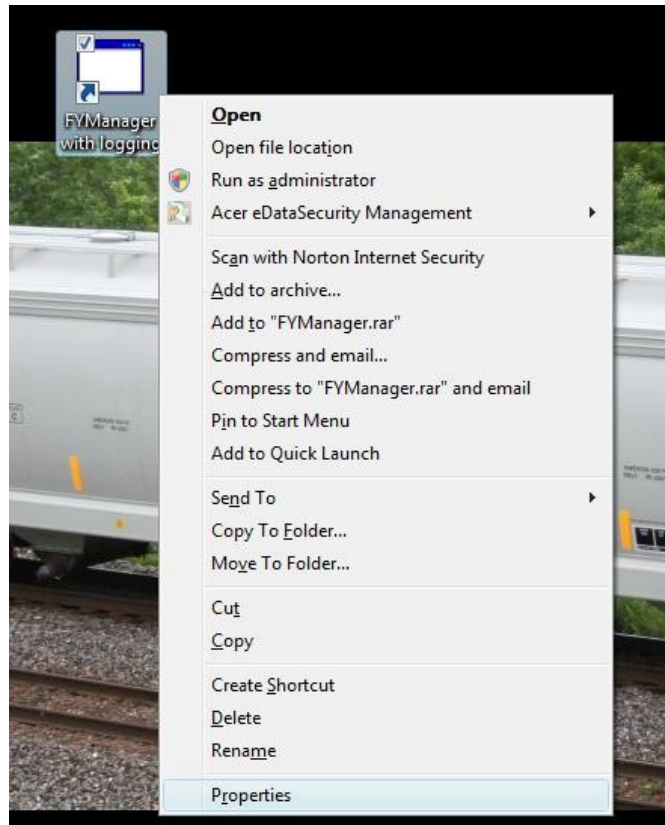
As usual in Windows you can do things in several ways. Quickly creating shortcuts can also be

done by right clicking on the FYM executable (FYManager.exe) and choosing the Send To/Desktop(Shortcut) option from the shown context menu (see image below). This will instantly create a shortcut for FYManager.exe on your desktop.

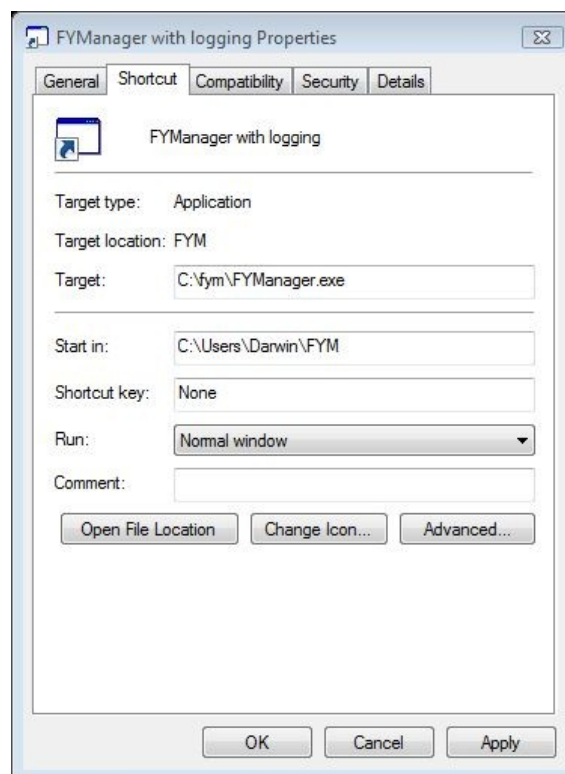


The shortcut can be used now, although it still has no extra command line parameters. To add some of those command line parameters explained under “Available Options” you now need to do the following:

8. Right click with your mouse on the shortcut you just created.
9. The context menu for the shortcut is now shown. Select the “Properties” option.



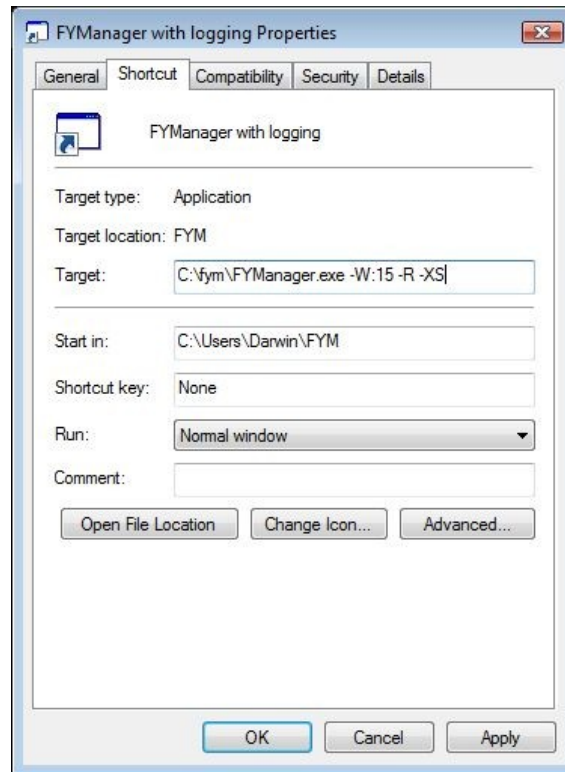
10. When you click on the Properties option the following window is shown:



11. The Target line is the important part of this property window. It is currently showing something like C:\fym\FYManager.exe or "C:\My Games\FYM\FYManager.exe". Notice the use of "" here. When the complete path for the FYM executable contains spaces then "" should be used around the path and executable file name.
12. To add a command line parameter, you just add it to the end of the target line, separated by

a space between the command line parameter and the executable. So when we want to add the -R to enable logging, the target should look like this D:\fym\FYManager.exe -R or "C:\My Games\FYM\FYManager.exe" -R.

13. More than one command line parameter is also possible. You just keep adding them to the end of the line, separated by a space from the one before it. So it could ultimately look like this: D:\fym\FYManager.exe -R -XS -SHF.



14. Click on the OK button to save your changes.

By double clicking on the shortcut you will now be starting FYM with these added options.

Whenever you want to change the command line parameters your FYM is using, you can just go through steps 8-14 again.